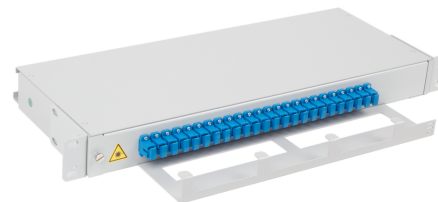


## OD1-LC-SC-24 Rack Mount pivoting ODF

### Description:

The optical cabinet OD1-LC/SC-24 introduces an 1U optical distribution frame, designed for termination for up to 48 optical fibers. Terminated with LC, SC or E2000 footprint cutout in pivoting optical distribution frame is an economical rack mountable patch panel for use with splicing of manufactured pigtails, preterminated cables and field-installable connectors. The cables are strain-relieved at the rear panel of the unit. The pivoting shelf is equipped with a splice tray holder and protection which guides, stores and OD1-LC/SC-24 is used in installations where space is limited.



### Features:

- 24x LC, SC or E2000 adapters footprint cutout
- Accommodates up to 24/48 fibers in 1 rack unit
- Designed for duplex LC and single or duplex SC connector-adaptor types
- Splicing and termination optical cable in one box
- Pivoting shelf eases connector routing and cable routing
- Front Patch cables support
- Splice cassette holder enables cable termination with the help of pigtail splicing
- Enables management and rearrangement of cable slack
- Removable top cover provides unrestricted access
- Cable strain-relief provisions

### Specifications:

PART NUMBER	FIBER CAPACITY1		RACK UNITS	DIMENSIONS (HxWxD) mm	SHIP WGT kg
	SC connector	LC connector			
OD1-SC-24	24		1	44 x 432 x 1882	2.4
OD1-DSC-48	483		1	44 x 432 x 1882	2.4
OD1-DLC-48		483	1	44 x 432 x 1882	2.4

Note:

1) Splice Tray: see datasheet CMS\_01-09\_EN-KNS Splice\_trays

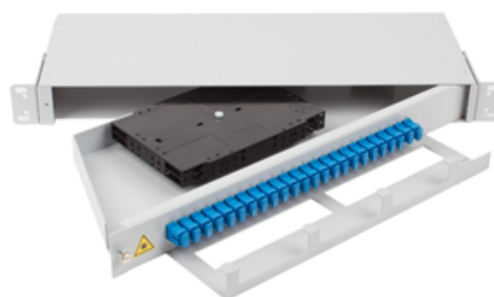
2) Without front patch cable support

3) Fiber capacity depends on connector adaptor type, e.g. in the case DLC it is double capacity.

Under the condition that in splice trays then instead of standard protection sleeves there are used smaller and thinner sleeves and there are used 2 lines in one splice holder.



OD1-SCF S-24-C-2 open cabinet



OD1-SC S-24-C-2 open cabinet

**Ordering code:**

<b>OD1</b>		-	<b>XXX(F)<sup>1</sup> X</b>	-	<b>XX</b>	-	<b>C</b>	-	<b>X</b>
<b>Version</b> 1 Rack Unit Type									
<b>Coupling Type</b> <b>XX</b> <b>SC(F)</b> SC <b>DSC(F)</b> duplex SC <b>DLC(F)</b> duplex LC			<b>X</b> <b>M</b> Multimode <b>S</b> Single mode <b>A</b> APC			<b>Fiber Capacity</b> 12, 24, 48 fibers		<b>X - Number of Splice Cassettes</b> <b>0</b> No splice cassette <b>1</b> 1 Splice cassette <b>2</b> 2 Splice cassette	

Note: 1) F fixed adaptors by screws

### Example of Application:

<b>OD1-SC A-24-C-2</b>	1U optical distribution frame, 24x ASC termination without screws
<b>OD1-DSCF S-48-C-2</b>	1U optical distribution frame, 48x SC termination (24x duplex SC connectors with screws)
<b>OD1-DLC S-48-C-2</b>	1U optical distribution frame, 48x LC termination (24x duplex LC connectors without screws)